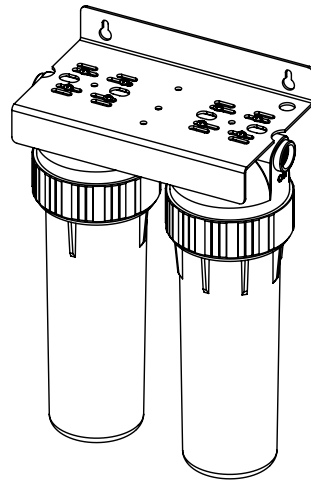
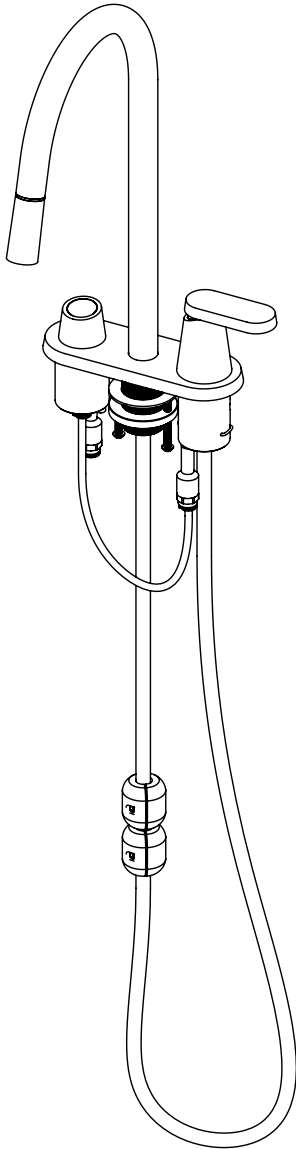


AURA

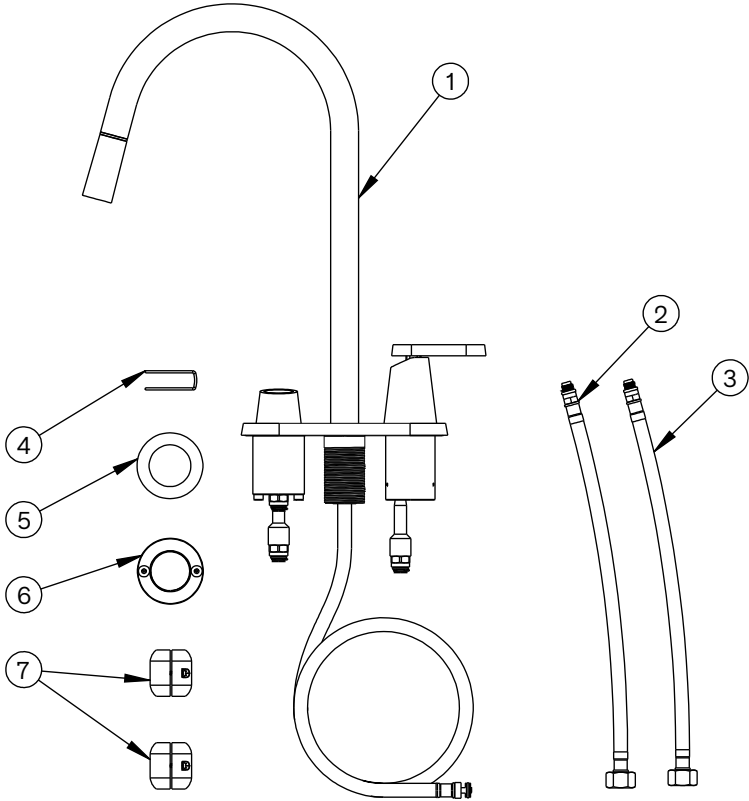
WATER

Sink Mixer Pull Out Spray with Alkaline



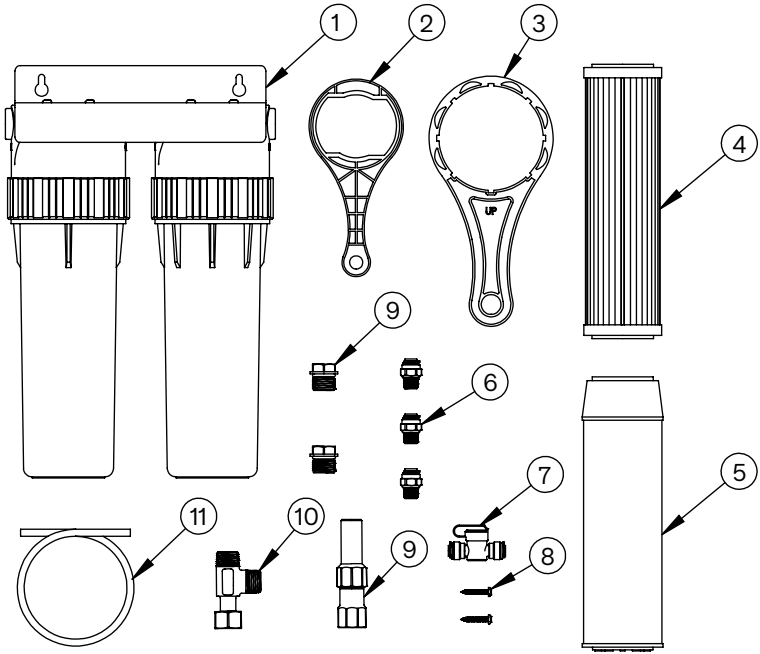
Aura Pull Out Sink Mixer List of Parts

ITEM	DESCRIPTION	QTY.
1	AURA SINK MIXER	1
2	BRAIDED HOSE - HOT	1
3	BRAIDED HOSE - COLD	1
4	PULL OUT HOSE RETAINING CLIP	1
5	AURA SINK MIXER CLAMPING PLATE	1
6	AURA SINK MIXER CLAMP	1
7	PLUMMET	2

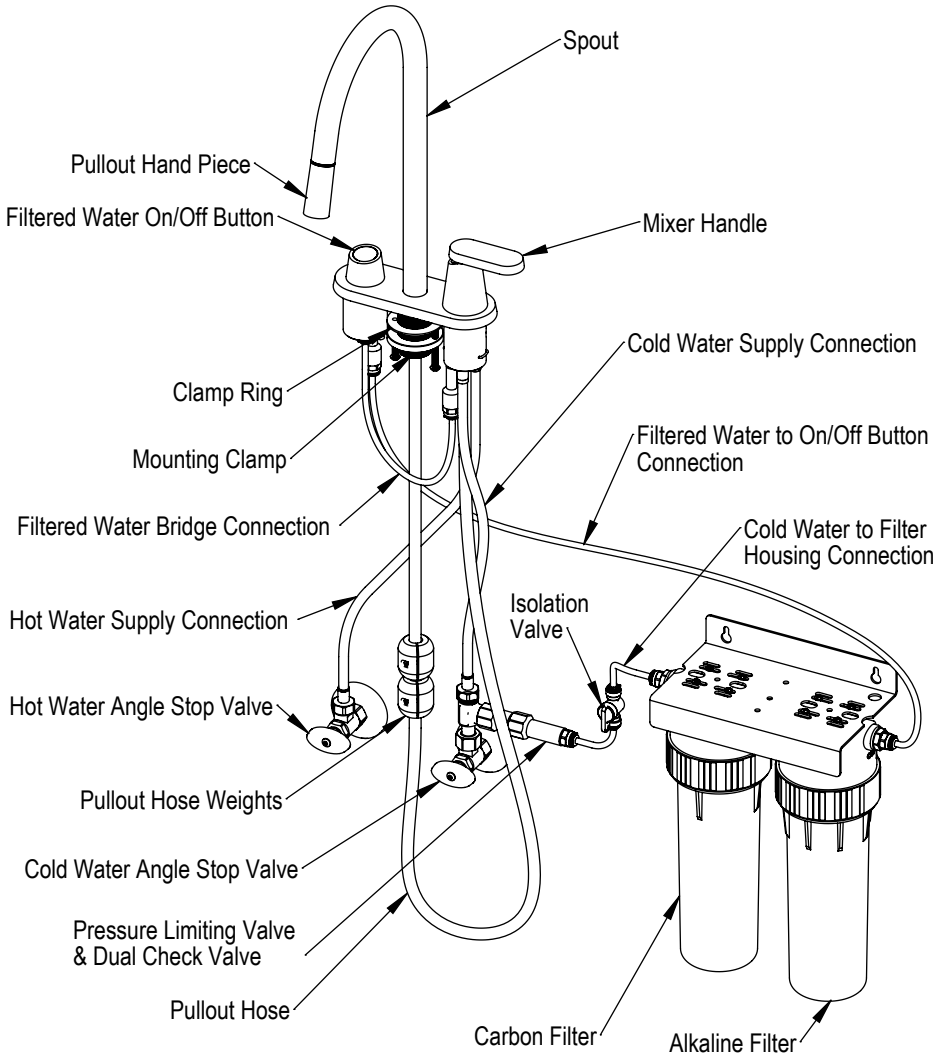


Alkaline Filter List of Parts

ITEM	DESCRIPTION	QTY.
1	ALKALINE FILTER ASSEMBLY	1
2	FILTER HOUSING TWIST-LOCK CAP WRENCH	1
3	FILTER HOUSING WRENCH	1
4	ACTIVATED CARBON FILTER CARTRIDGE	1
5	ALKALINE FILTER CARTRIDGE	1
6	1/4" TUBE PUSH IN ADAPTER	3
7	1/4" SHUT OFF VALVE	1
8	BRACKET MOUNTING SCREW	2
9	1/4" TUBE ADAPTOR FITTING	2
10	PRESSURE LIMITING VALVE WITH DUAL CHECK 500KPa	1
11	1/4" TUBE	1



General Arrangement & Connection Diagram



Install Guide Quick Reference:

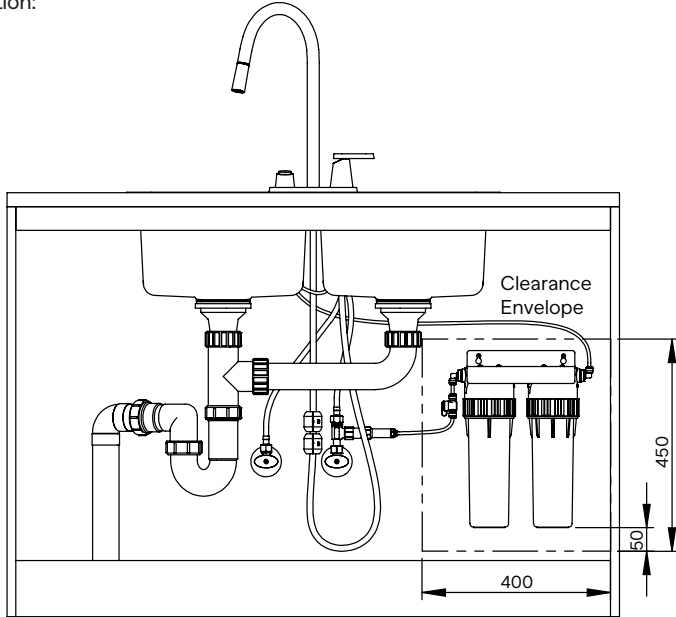
- Pullout Mixer Installation
- Filter Unit Installation
- Filter Cartridge Replacement
- Operations & Commissioning
- Sink Mixer Care & Maintenance
- Filter Maintenance Schedule & Spare Parts List

- Page 6 - 8
- Page 9-10
- Page 11
- Page 12
- Page 12
- Page 13

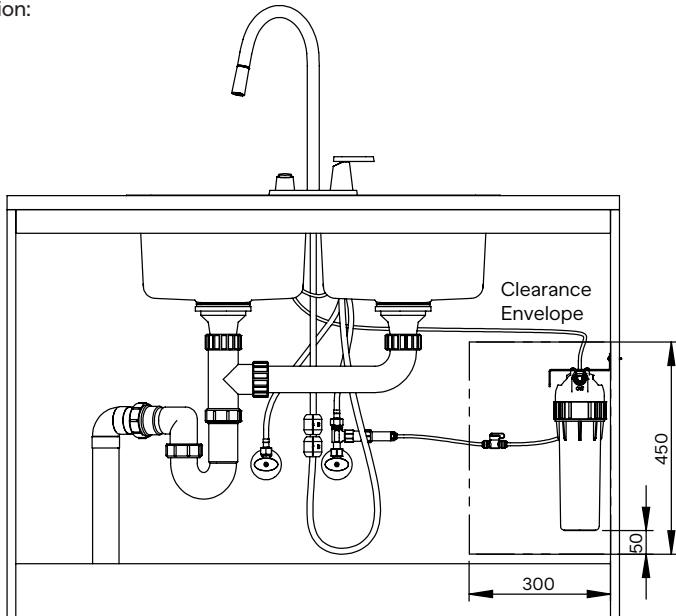
Filter Unit Clearance Requirement

The minimum clearance envelope is 400x450x300mm. The filter unit can be mounted on the back wall or the sidewall of the under-sink cupboard if space is limited. A minimum clearance of 50mm is needed for easy filter cartridge replacement.

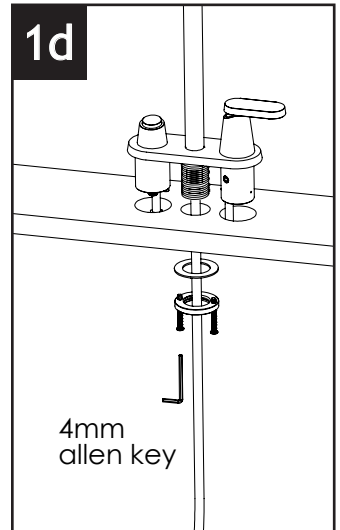
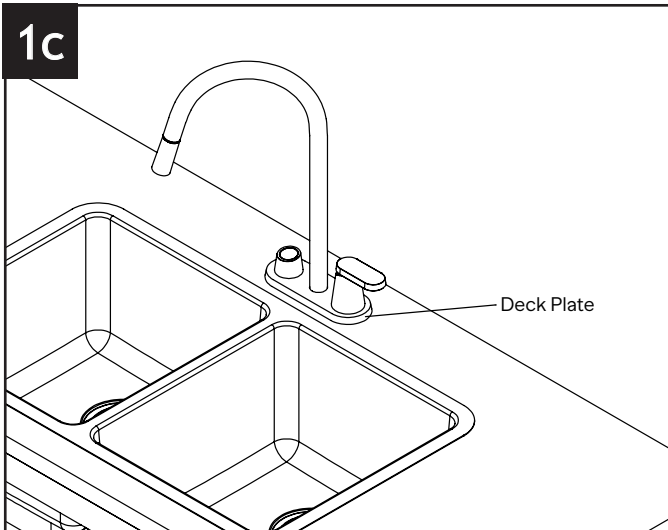
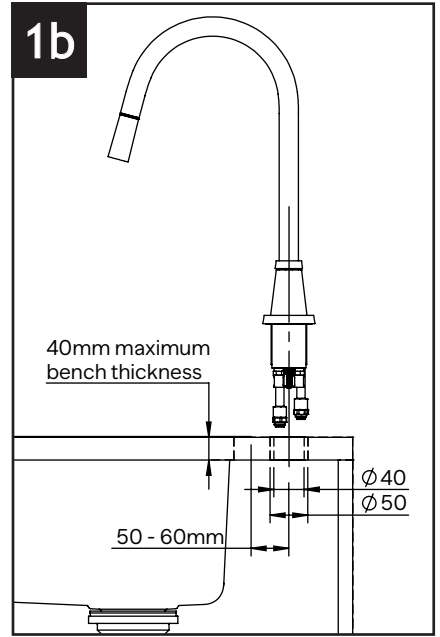
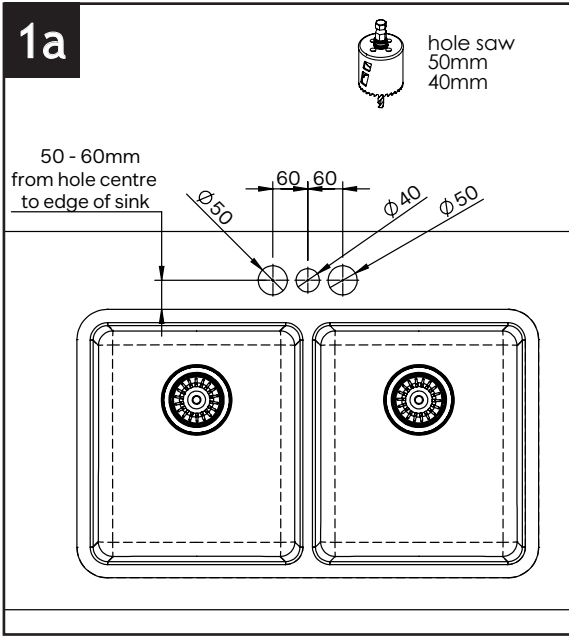
- Backwall installation:



- Sidewall installation:



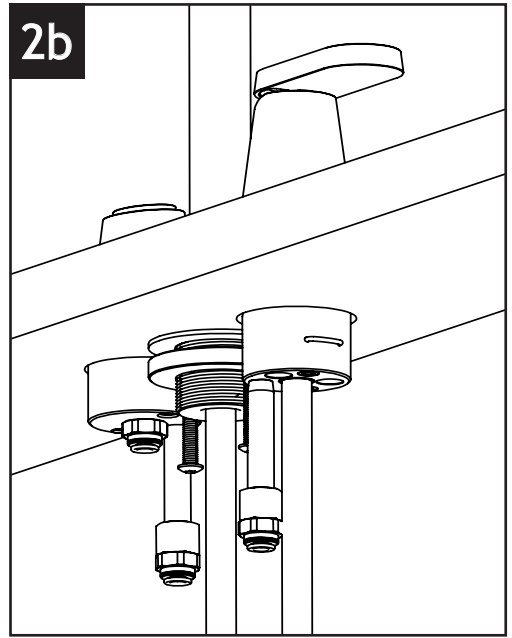
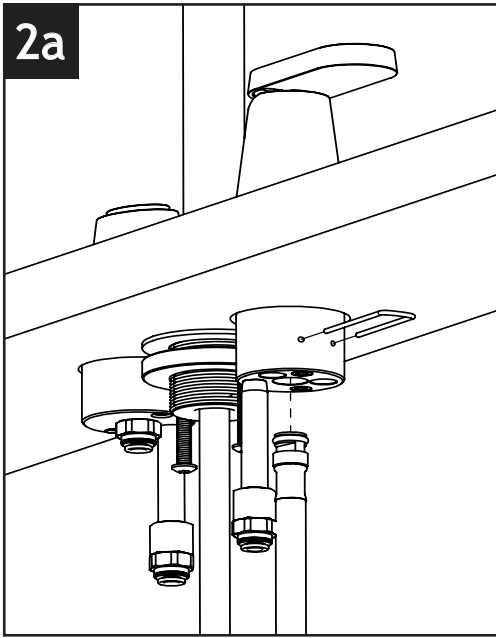
Aura Pull Out Sink Mixer Installation



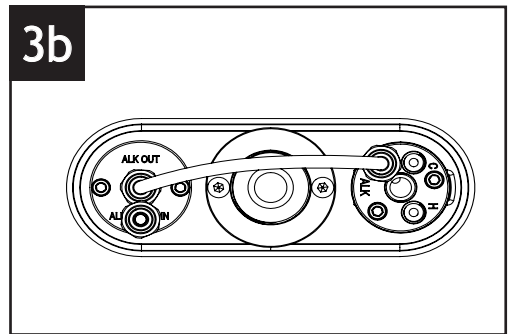
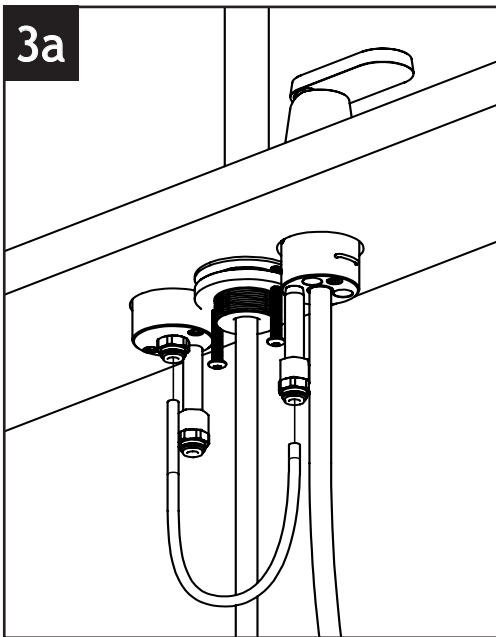
Maximum bench thickness is 40mm. Drill two 50mm diameter holes and one 40mm hole as shown in Step 1a.

Recommended distance between the centre of the holes and edge of the sink is 50 to 60mm to avoid clashing of the sink, tap's deck plate and undermount clips if undermounting the sink. Relocate undermount clips if necessary.

Sufficient clearance is needed between the tap and back of the cabinet for easy installation of mounting clamps and tube connections etc.

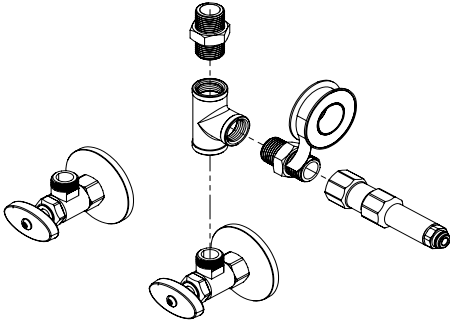
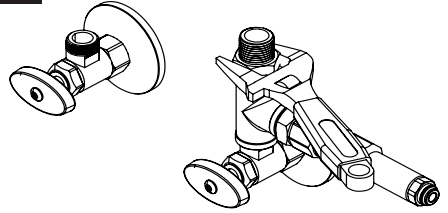


Insert the loose end of the pullout hose into the center port of the mixer body, carefully push the hose all the way in then lock it with the slide pin. Pull the hose down gently to check if it's locked in place. If there is too much resistance for the hose to go in, grease the o-ring seal inside the mixer body.

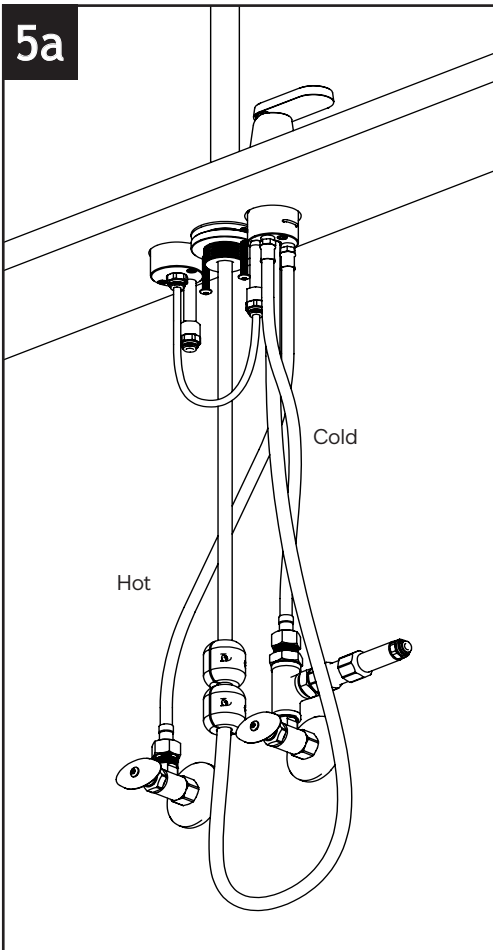
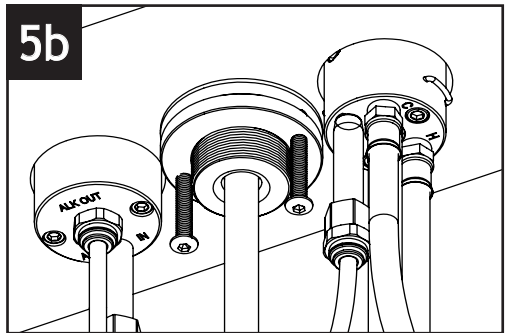


Use a tube cutter, cut approximately 300mm of the 1/4" tubing. Connect the "ALK OUT" port from the left-hand side of the tap to the "ALK" port on the right-hand side.

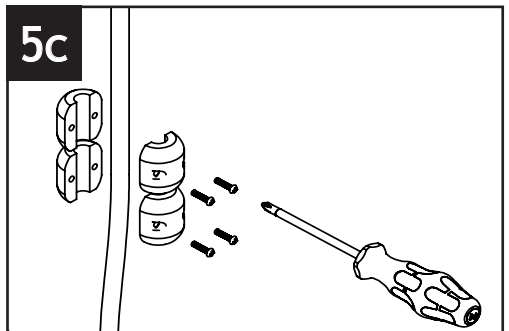
Push the tubing all the way into the fitting till it stops then pull the collar in the opposite direction to lock on to the tubing. Pull the tube to check if it's securely locked into place.

4a**4b**

Install brass tee, pressure limiting and dual check valve onto the cold-water supply stop valve. Apply Teflon tape or thread sealant to all threaded joints. Do not overtighten.

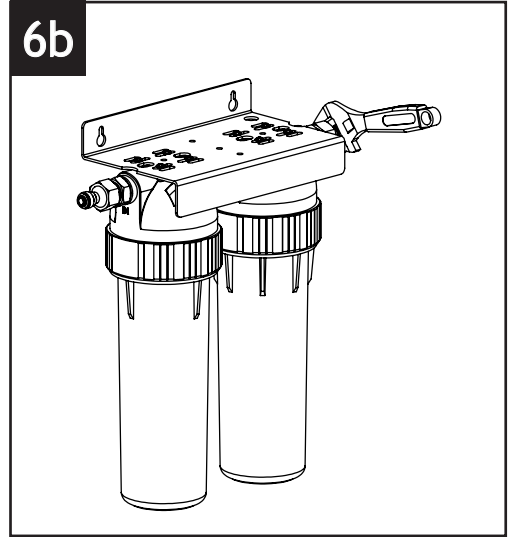
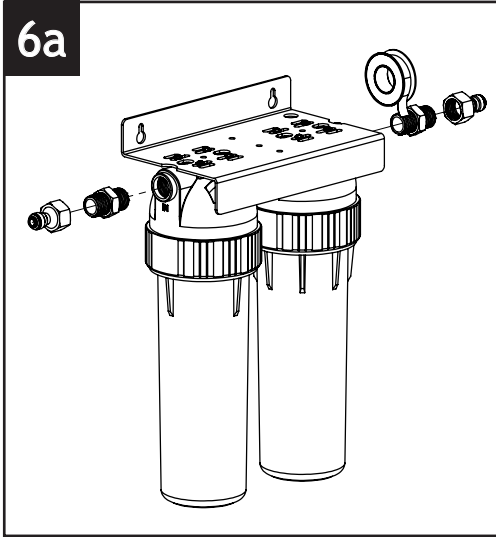
5a**5b**

Connect the hot & cold braided supply hoses from the stop valves to their corresponding ports on the mixer body marked "H" and "C".

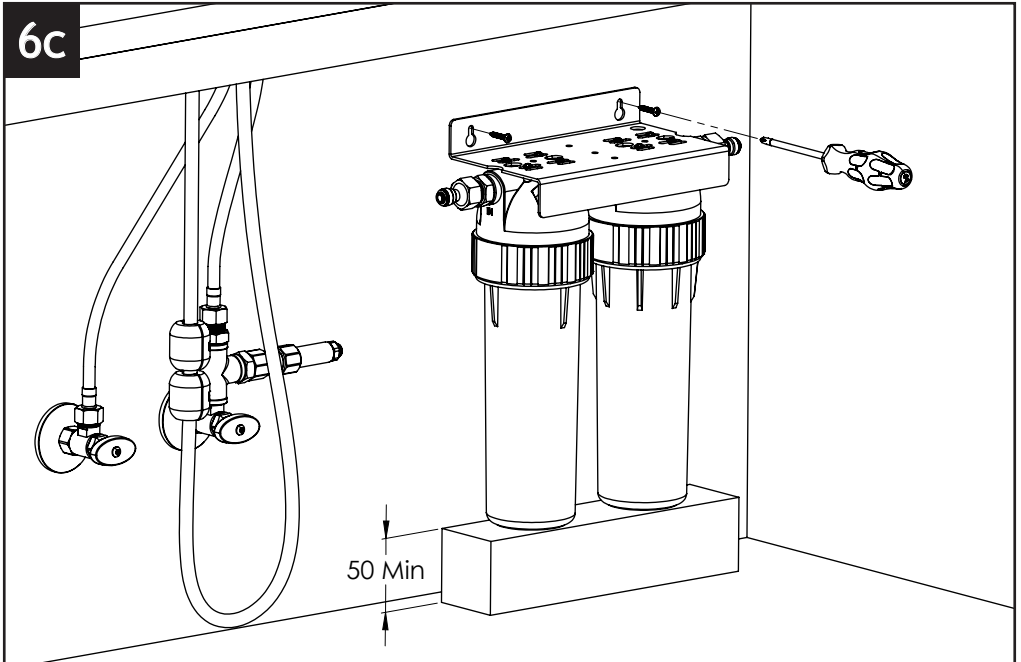
5c

Weights shall be installed approx 450mm below the bench and free of obstruction. Tighten the screws and check to make sure they don't slip. Test the pullout function by pulling the hand piece down while swiveling the spout from left to right, adjust the height of the weights if necessary.

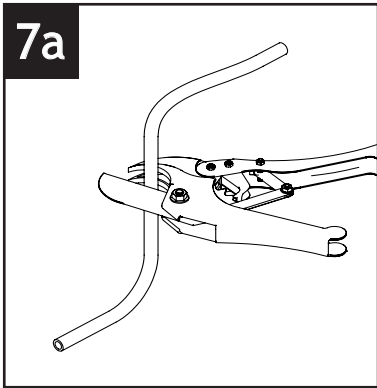
Filter Unit Installation



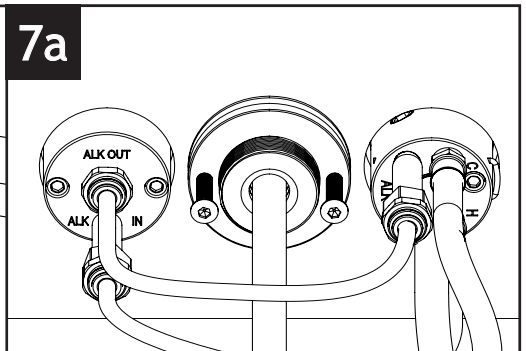
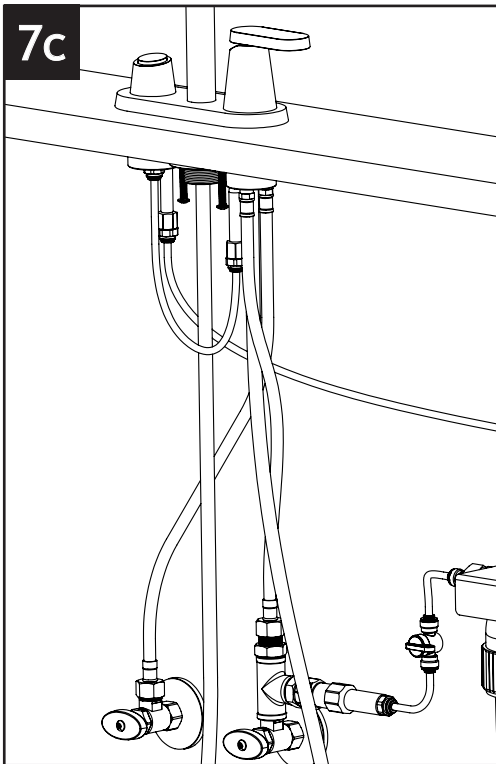
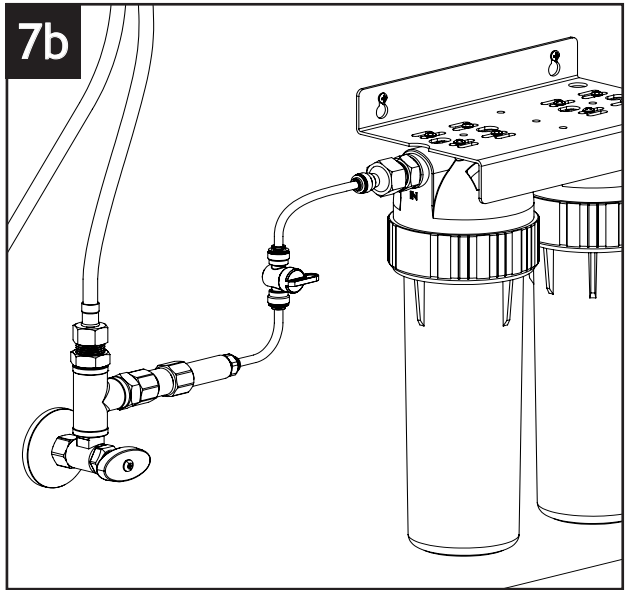
Install the brass hex nipple and 1/4" tube fittings onto both the inlet and outlet of the filter unit. Apply Teflon tape on all the threads, do not overtighten the fittings.



Raise the filter unit using a piece of timber that's thicker than 50mm, place it in a desired location that meets the minimum clearance requirement. Mark and drill the screw locations, then fasten the unit with the mounting screws supplied.

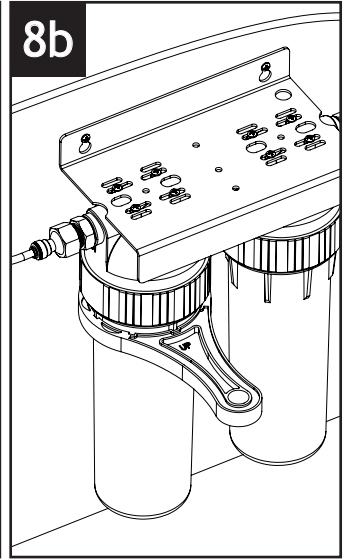
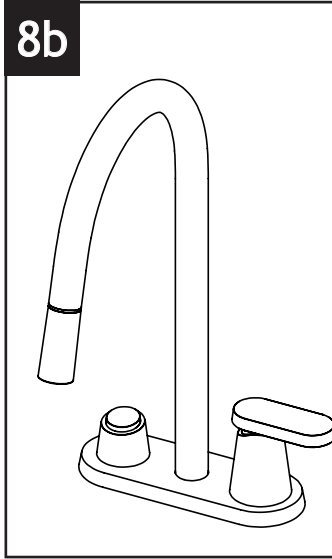
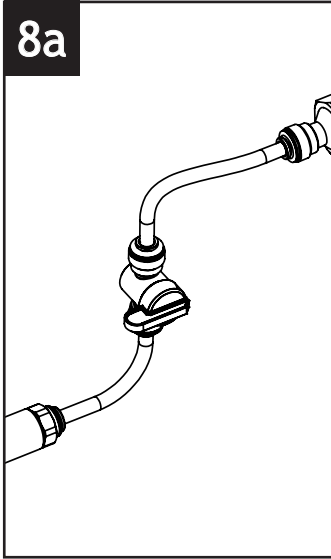


Estimate then cut a length of tubing to connect the outlet of the pressure limiting and dual check valve to the filter unit's inlet. Then cut that tubing in half and install an isolation ball valve in between.

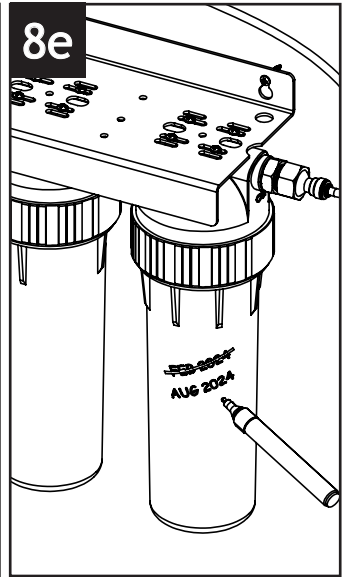
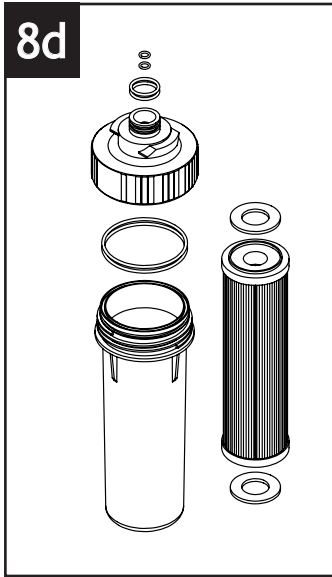
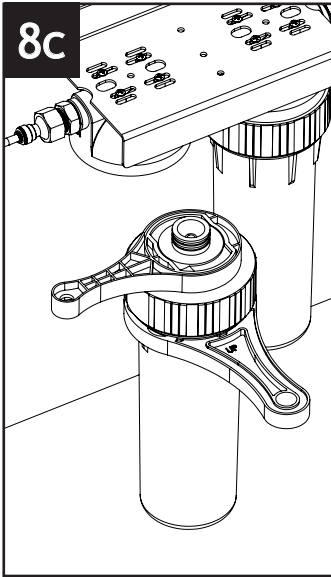


Connect the filter unit outlet to the "ALK in" port under the On/Off button. Trim off any excess tubing and keep all the connections under the sink neat and tidy.

Filter Cartridge Replacement

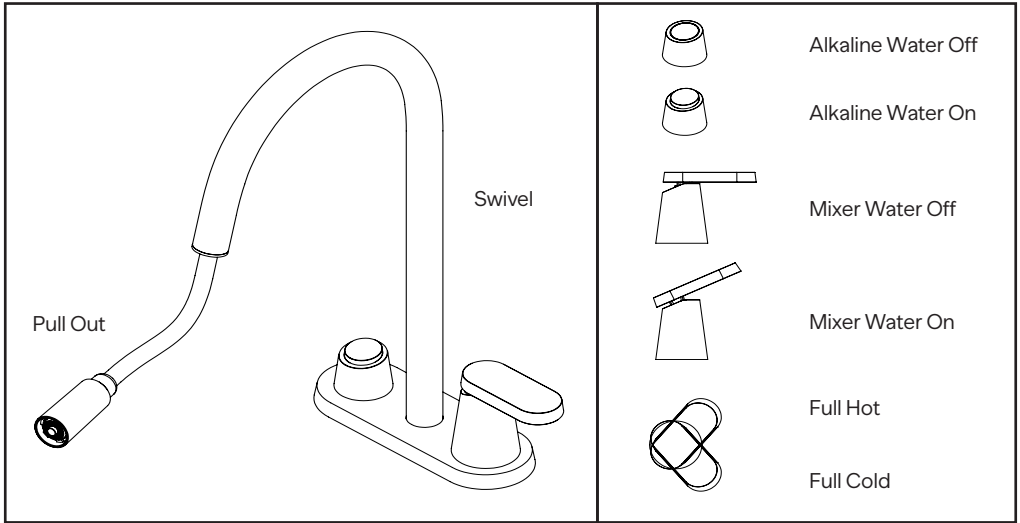


Turn the filter isolation valve to the OFF position, then turn the Alkaline On/Off button to On till no more water is coming out the spout. Place a rag or towel under the filter unit, slip on the large housing wrench and loosen the cartridge housing from the filter unit. Release the wrench and unscrew the housing by hand till it drops.



Lock the smaller housing cap wrench onto the top of the housing, then turn the housing wrench to unscrew the top cap from the housing. Replace the cartridges, check, replace and lubricate all the o-rings and seals if necessary. Reinstall the housings by reversing the steps above. Turn cold water back on and mixer tap to full cold, vent and flush the system. Record the date of cartridge replacement on the housing with a permanent marker.

Operations



Before Commissioning

- Check all plumbing fittings are tightened.
- Check all flexible connections are free of kinks and correct against the connection diagram on page 4.
- Check if the sink and waste have been installed and plumbed up to the drain.
- Make sure the Alkaline On/Off button and Mixer handle are in the Off position.

Commissioning

- Gently turn on the hot and cold stop valves and the filter isolation valve. Check for leaks and rectify if any leak is detected.
- Turn mixer handle from full hot to full cold and flush till water coming out is clear.
- Turn on the press the Alkaline On/Off button, let the filters vent and flush till water coming out is clear.
- Adjust water pressure by adjusting the hot and cold stop valves if necessary. Write the installation date on the filter housing with a permanent marker.
- Test the pullout function of the tap, adjust the pullout hose and position of the weights to ensure a smooth pull down and retract.

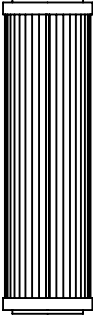

Cleaning & Maintenance

- Using a soft cloth or dampened sponge, gently clean with soapy water, using a mild detergent. Rinse with clean water and towel dry.
- Clean regularly (weekly). Dry with a soft cloth after each use.
- For a deeper clean, use a 50:50 mix of vinegar and water.
- Wipe with a soft cloth and then rinse immediately with fresh water and gently towel-dry.

Caution!

- Do not use any chemical or abrasive cleaners eg. ammonia or bleach.
- Protect against exposure to tile or grout cleaners.
- Do not use an abrasive cleaner eg. Ajax or Jiff.
- Avoid using a scrubbing brush or scourer to clean.

Filter Maintenance Schedule & Spare Parts List

Filter Cartridge Type	Spare Part Number	Life Span	Replacement Schedule
Carbon 	xxxxx	5000 Gal (18927L) Depend on water quality	6-12 Months
Alkaline 	xxxxx	Approx. 3000-5000L	3-6 Months

Disclaimer

While we aim to ensure the specifications shown are correct at time of printing, Sussex Taps reserves the right to make modifications without prior notice.

Always use the physical product for accurate measurements. Dimensions are subject to change without notice. All measurements are shown in millimetres. Please allow for a normal manufacturing tolerance of $\pm 5\text{mm}$ of any dimension.